

**GPX1 Antibody**  
**Rabbit mAb**  
**Catalog # AP91033****Specification**

---

**GPX1 Antibody - Product Information**

Application	WB, IHC, ICC, IP
Primary Accession	<a href="#">P07203</a>
Reactivity	Rat
Clonality	Monoclonal
<b>Other Names</b>	
GPX1; GSHPX1; MGC14399; MGC88245 ; Glutathione Peroxidase 1;	

Isotype	Rabbit IgG
Host	Rabbit
Calculated MW	22088 Da

**GPX1 Antibody - Additional Information**

Dilution	WB~~1:1000 IHC~~1:100~500 ICC~~N/A IP~~N/A
Purification	Affinity-chromatography
Immunogen	A synthesized peptide derived from human GPX1
Description	Glutathione peroxidase 1 (GPX1) is a cytosolic selenoprotein which reduces hydrogen peroxide to water. GPX1 is the most abundant and ubiquitous among the five GPX isoforms identified so far. It is an important component in the anti-oxidative defense in cells and is associated with a variety of disease conditions, such as colon cancer, coronary artery disease and insulin resistance.
Storage Condition and Buffer	Rabbit IgG in phosphate buffered saline , pH 7.4, 150mM NaCl, 0.02% sodium azide and 50% glycerol. Store at +4°C short term. Store at -20°C long term. Avoid freeze / thaw cycle.

**GPX1 Antibody - Protein Information****Name** GPX1 ([HGNC:4553](#))**Function**

Catalyzes the reduction of hydroperoxides in a glutathione- dependent manner thus regulating cellular redox homeostasis (PubMed:<a href="http://www.uniprot.org/citations/11115402"

target="\_blank">11115402</a>, PubMed:<a href="http://www.uniprot.org/citations/36608588" target="\_blank">36608588</a>). Can reduce small soluble hydroperoxides such as H<sub>2</sub>O<sub>2</sub>, cumene hydroperoxide and tert-butyl hydroperoxide, as well as several fatty acid-derived hydroperoxides (PubMed:<a href="http://www.uniprot.org/citations/11115402" target="\_blank">11115402</a>, PubMed:<a href="http://www.uniprot.org/citations/36608588" target="\_blank">36608588</a>). In platelets catalyzes the reduction of 12-hydroperoxyeicosatetraenoic acid, the primary product of the arachidonate 12-lipoxygenase pathway (PubMed:<a href="http://www.uniprot.org/citations/11115402" target="\_blank">11115402</a>).

#### Cellular Location

Cytoplasm {ECO:0000250|UniProtKB:P11352}. Mitochondrion {ECO:0000250|UniProtKB:P11352}

#### Tissue Location

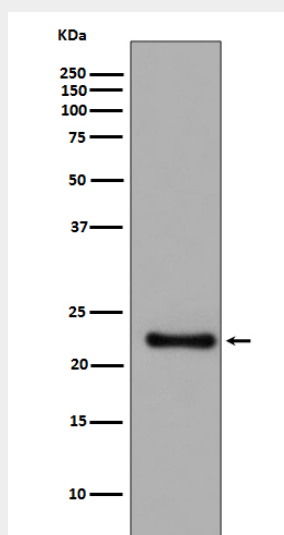
Expressed in platelets (at protein level).

### GPX1 Antibody - Protocols

Provided below are standard protocols that you may find useful for product applications.

- [Western Blot](#)
- [Blocking Peptides](#)
- [Dot Blot](#)
- [Immunohistochemistry](#)
- [Immunofluorescence](#)
- [Immunoprecipitation](#)
- [Flow Cytometry](#)
- [Cell Culture](#)

### GPX1 Antibody - Images



Western blot analysis of GPX1 expression in SH SY5Y cell lysate.